



# ARIA STONE

- Fine lines and smooth surfaces
- Available in various trendy and contemporary colours
- Allows for modular, linear or 3D coursing patterns
- Modular dimensions for reduced waste and easier installations
- Fully finished corners
- Complements with Melville pavers and slabs

## UNITS



A  
3 1/2 in. x 2 3/8 in. x variable  
90 mm x 60 mm x variable



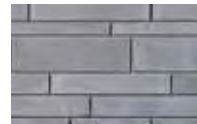
B  
3 1/2 in. x 4 in. x variable  
90 mm x 102 mm x variable



C  
3 1/2 in. x 6 3/4 in. x variable  
90 mm x 171 mm x variable  
(Available separately)

| Aria® Stone          | Small and medium | Large    | Mix 3-Height |
|----------------------|------------------|----------|--------------|
| Weight per cube (kg) | 1432             | 1517     | 1538         |
| Rows per cube        | 7                | 7        | 7            |
| Sq. ft. per row      | 11.87            | 11.87    | 12.42        |
| Sq. ft. per cube     | 83.09            | 83.09    | 86.94        |
| Corner pieces        | 100%             | 100%     | 100%         |
| Lin. ft. per row     | 40.0             | 20.0     | 32.0         |
| Lin. ft. per cube    | 280              | 140      | 224          |
| Qty per cube         | 154 units        | 70 units | 119 units    |

## AVAILABLE COLOURS



Heron



Soho Grey



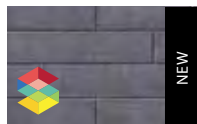
Rockland Black



Opera



## COLOURS ON REQUEST



Carbon



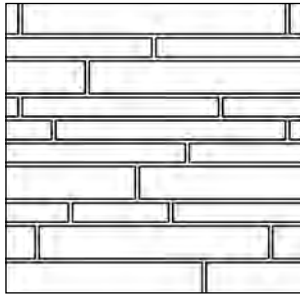
Oxyde



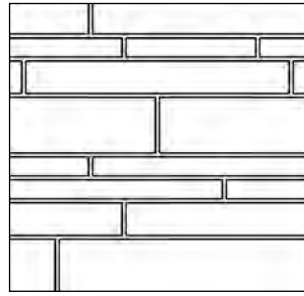
Yakisugi

| Aria® Stone          | Small and medium | Large           | Mix 3-Height    |
|----------------------|------------------|-----------------|-----------------|
| Weight per cube (kg) | 1432             | 1517            | 1538            |
| Rows per cube        | 7                | 7               | 7               |
| Sq. ft. per row      | 11.87            | 11.87           | 12.42           |
| Sq. ft. per cube     | 83.09            | 83.09           | 86.94           |
| Corner pieces        | -                | 100%            | 100% Large      |
|                      | 100% Medium      | -               | 100% Medium     |
|                      | 50% Small        | -               | 80% Small       |
|                      | 35 vertical ft.  | 41 vertical ft. | 38 vertical ft. |
| Lin. ft. per row     | 40.0             | 20.0            | 32.0            |
| Lin. ft. per cube    | 280              | 140             | 224             |
| Qty per cube         | 154 units        | 70 units        | 119 units       |

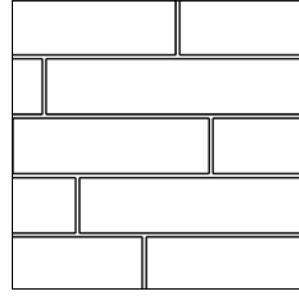
## MASONRY BONDS AND PATTERNS



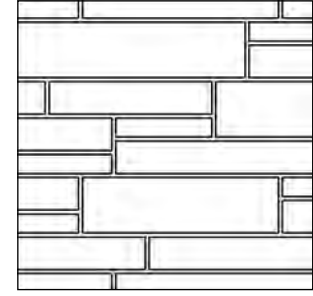
1 CUBE SMALL AND MEDIUM STONES - RANDOM COURSED



1 CUBE LARGE STONES + 1 CUBE SMALL AND MEDIUM STONES - RANDOM COURSED

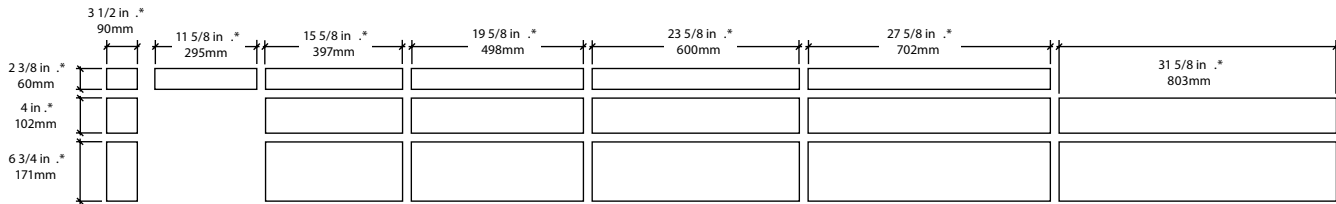


1 CUBE OF LARGE STONES RANDOM COURSED



1 CUBE LARGE STONES + 1 CUBE SMALL AND MEDIUM STONES - ASHLAR PATTERN

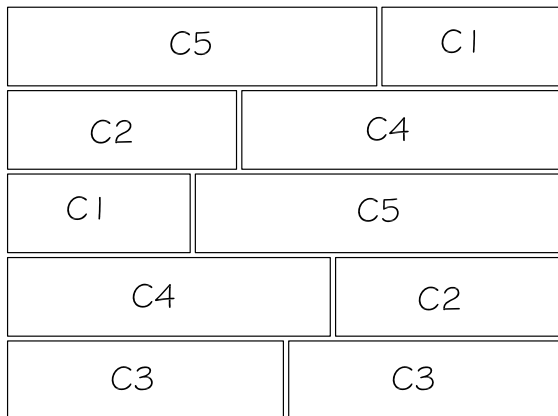
## SIZES – STONE CLADDING



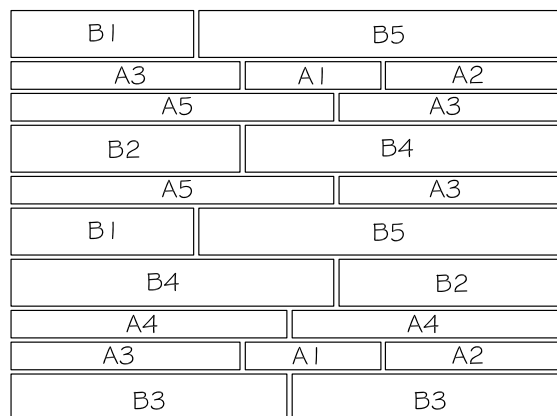
\* Actual dimensions . Allow a 3/8 in. (10 mm) mortar joint in order to obtain nominal dimensions. The Aria stone is modular in height and length

## TYPICAL LAYOUT

Each layout shown identifies all sizes on a cube. All sizes on the layout must be ordered.

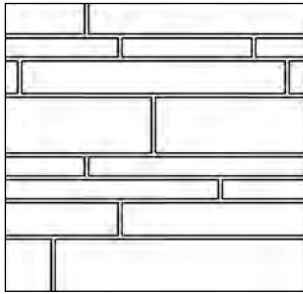


LARGE STONES

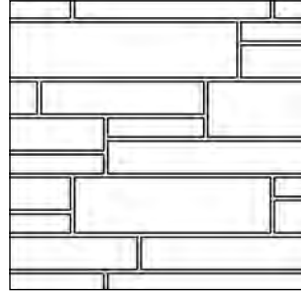


SMALL AND MEDIUM STONES

## MASONRY BOND AND PATTERNS

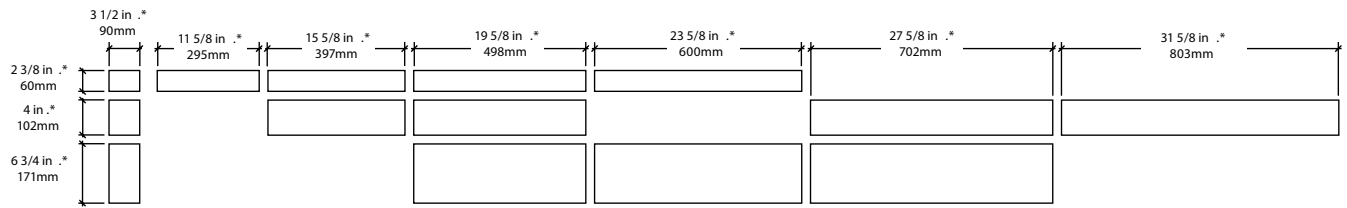


1 CUBE OF MIX 3-HEIGHT  
STONES - RANDOM COURSED



1 CUBE OF MIX 3-HEIGHT  
STONES - ASHLAR PATTERN

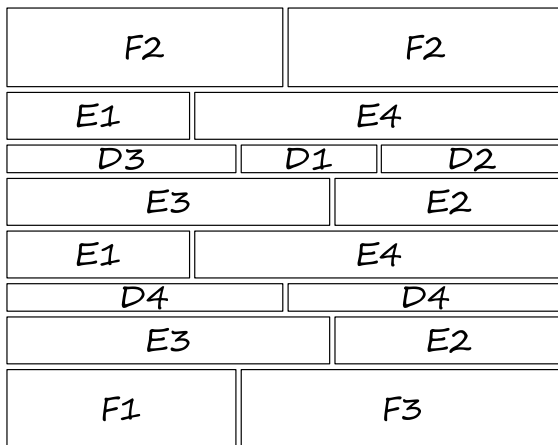
## SIZES – STONE CLADDING



\* Actual dimensions. Allow a 3/8 in. (10 mm) mortar joint in order to obtain nominal dimensions. The Aria stone is modular in height and length

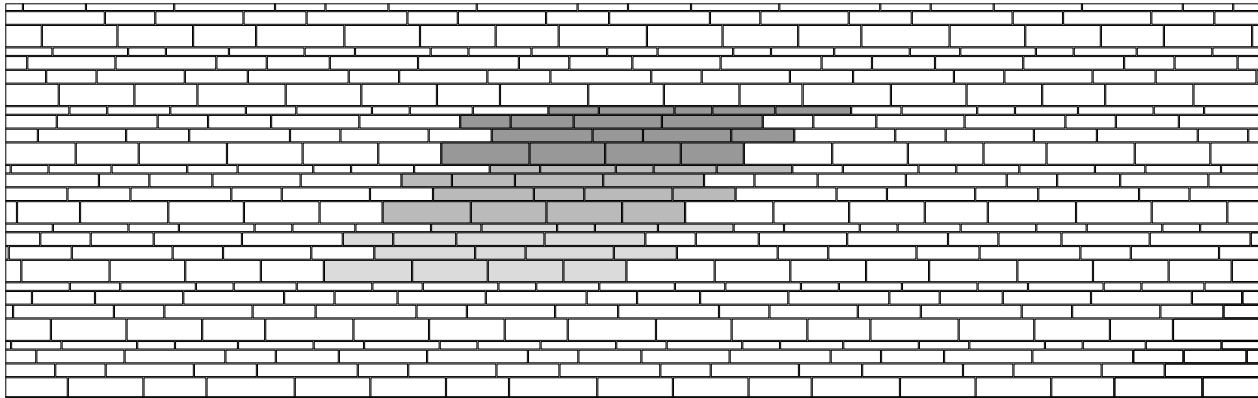
## TYPICAL LAYOUT

Layout shown identifies all sizes on a cube. All sizes must be ordered.



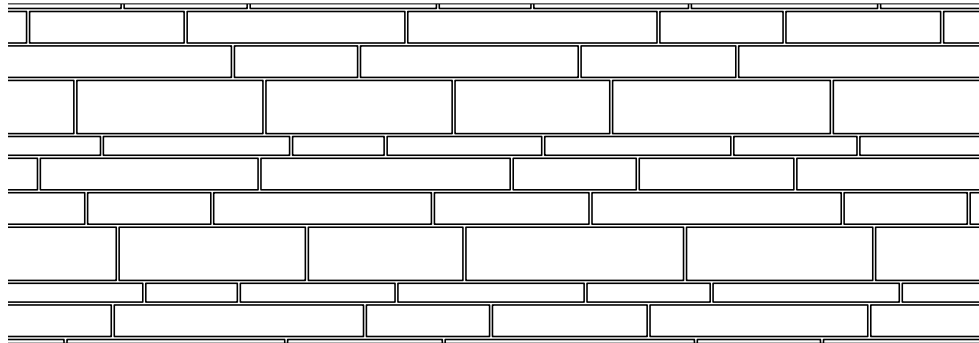
MIX 3-HEIGHT STONES (SMALL, MEDIUM AND LARGE)

1 CUBE OF MIX 3-HEIGHT STONES - RANDOM COURSED

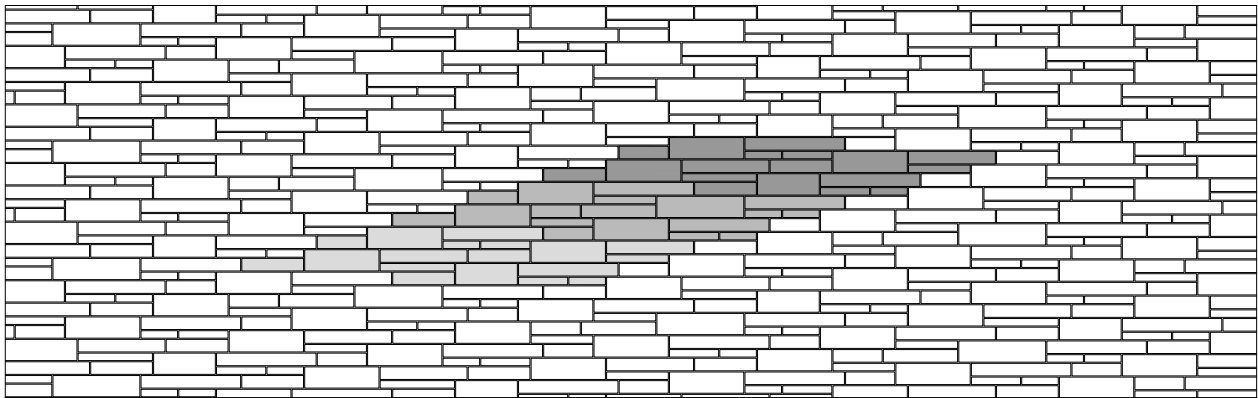


LINEAR FT. RATIO WITH  
A CUBE OF MIX 3-HEIGHT

1x row of Small  
2x rows of Medium  
1x row of Large

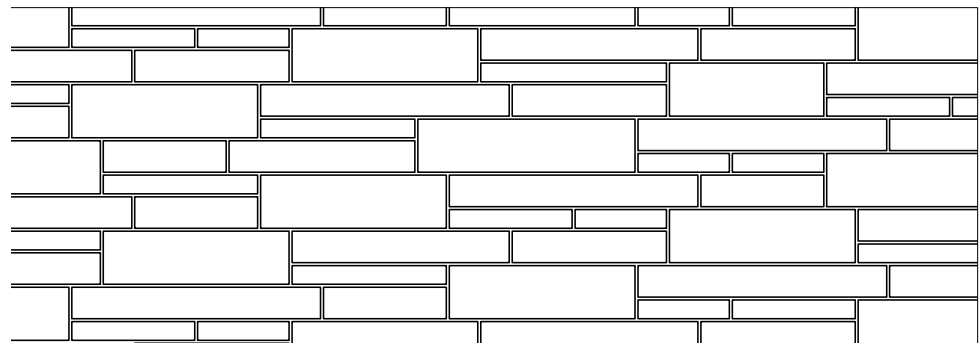


1 CUBE OF MIX 3-HEIGHT STONES - ASHLAR PATTERN



SQ. FT. RATIO WITH  
A CUBE OF MIX 3-HEIGHT

15% of Small  
47% of Medium  
38% of Large

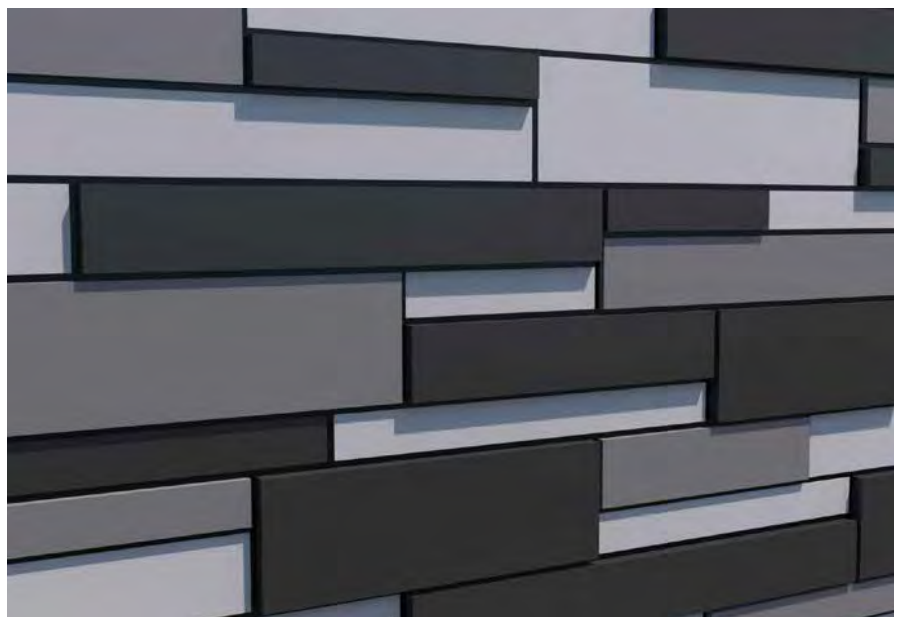


## INSTALLATION GUIDE




---

### 3D MODULAR INSTALLATION

The 3D look is obtained with a maximum variance of 5/16 in. (8 mm)



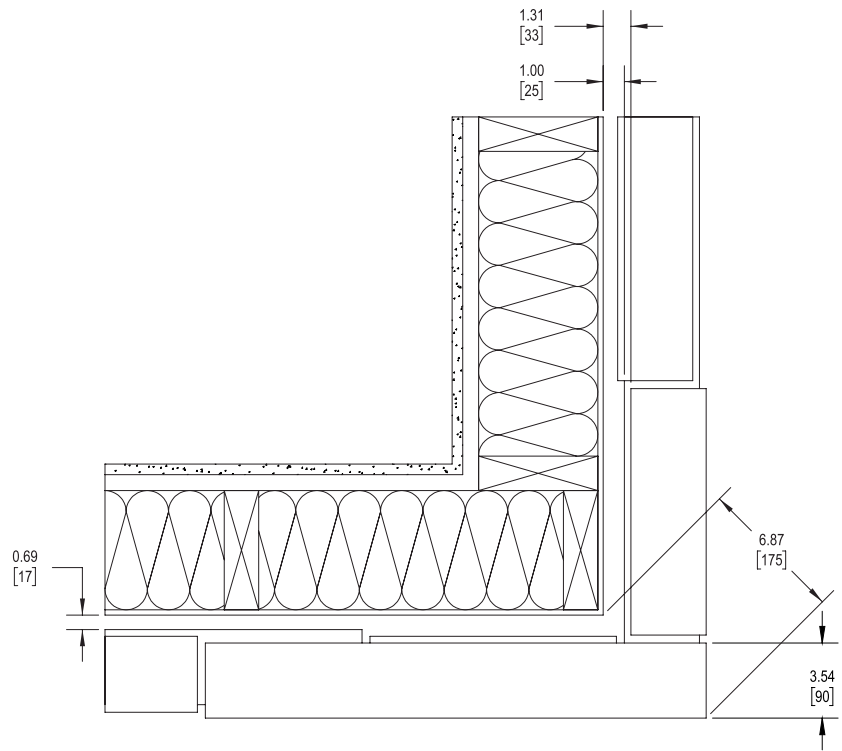
#### Colour scheme

-  +5/16 in . (8 mm)
-  0 in . (0 mm)
-  -5/16 in . (-8 mm)

Note: \*Colours shown in this installation guide do not represent reality

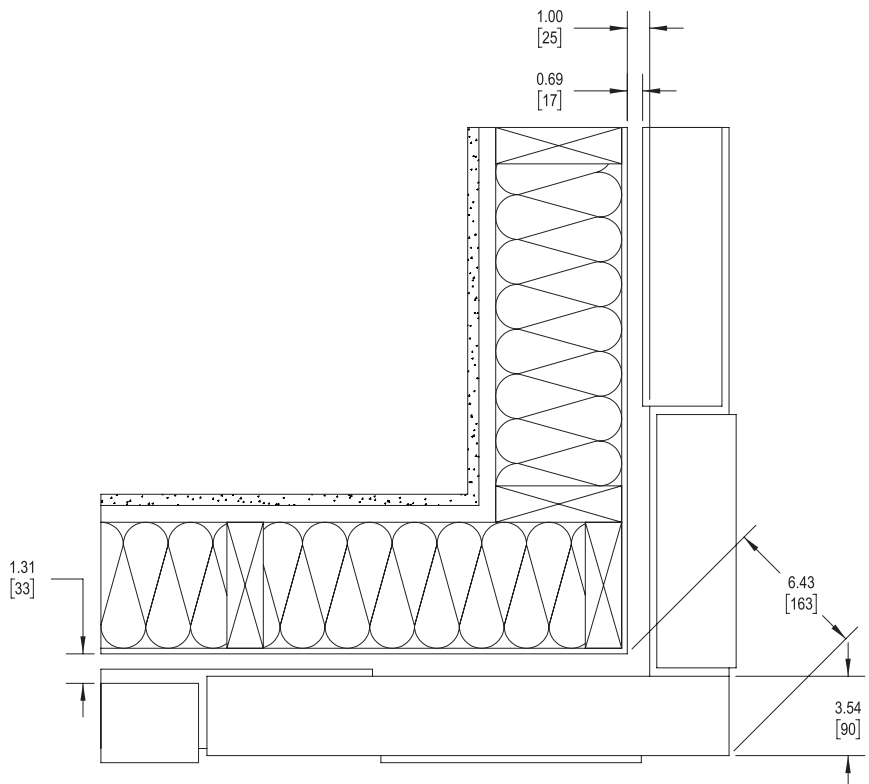
### 3D MODULAR INSTALLATION – WALL CORNER OPTION A

The stones placed in the corner of a wall are also installed in 3D. The mason's line is placed at 6.87 in. (175 mm) from the corner of the house in a diagonal line.



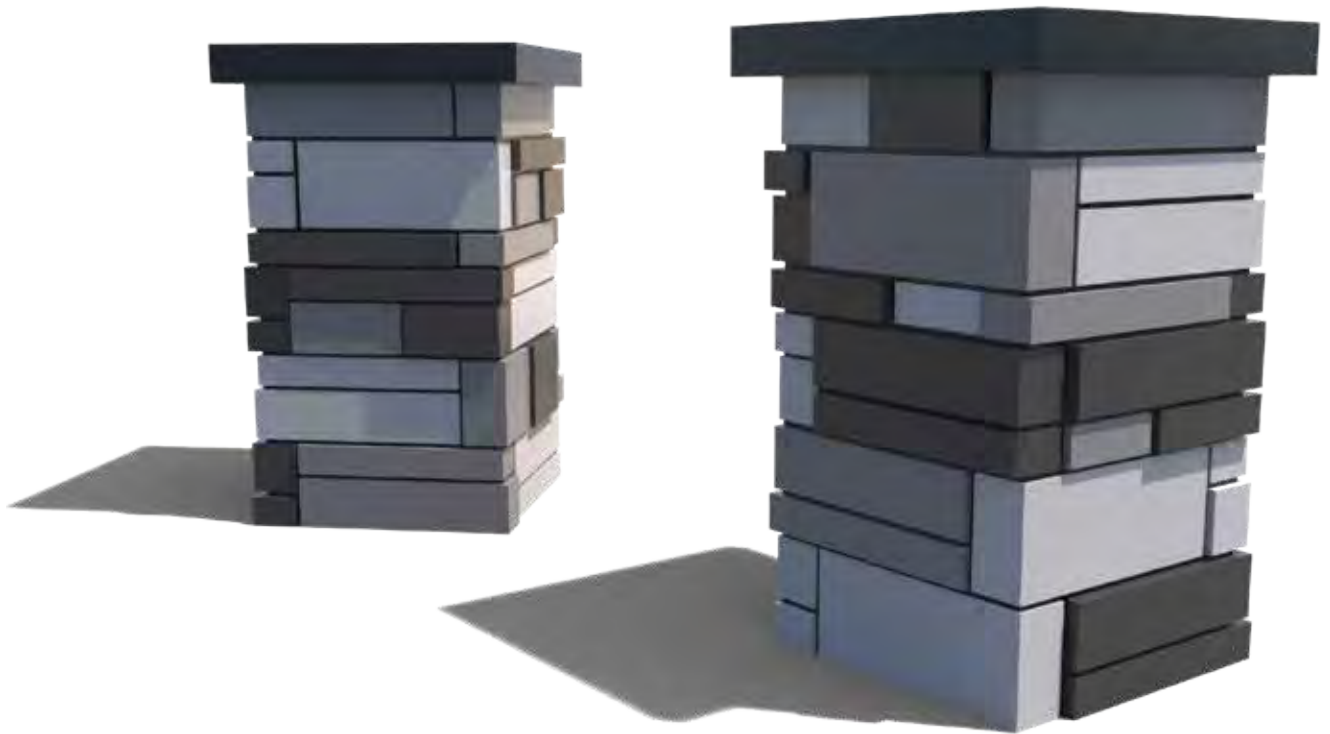
### MODULAR INSTALLATION – WALL CORNER OPTION B

The stones placed in the corner of the wall are aligned. The mason's line is placed at 6.43 in. (163 mm) from the corner of the house in a diagonal line.

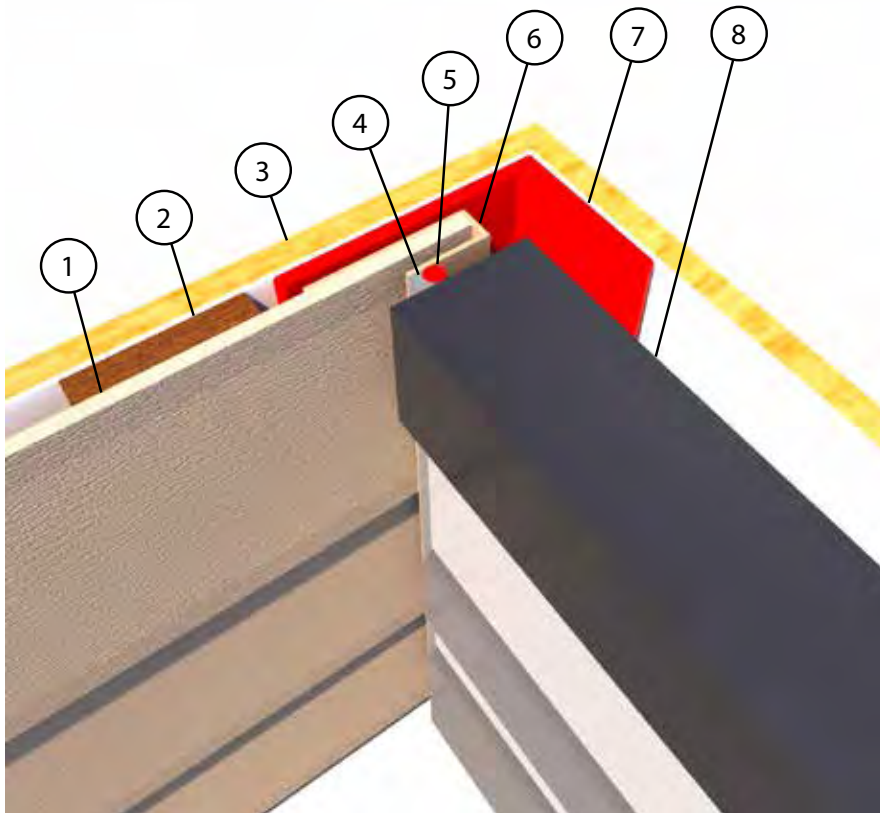


### 3D MODULAR INSTALLATION – COLUMN

The column shown in this example measures 20 in. (508 mm)



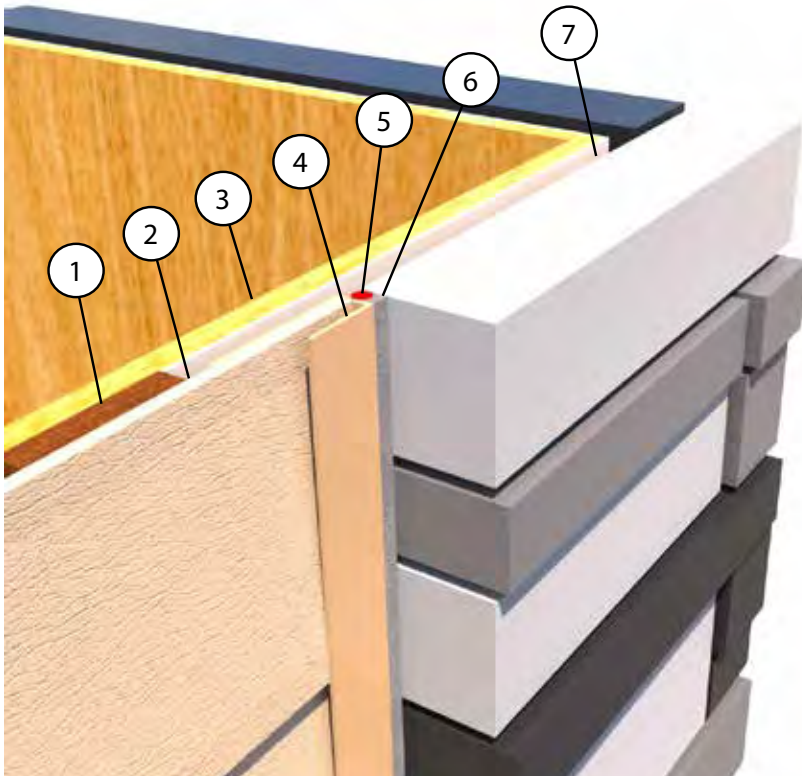
### DETAIL INTERIOR CORNER WITH VINYL SIDING



### COMPONENTS

1. Vinyl siding
2. Wood furring
3. Sheathing covered with WRB  
(Backup studs not shown)
4. Caulk
5. Backer rod
6. Trim
7. Flashing
8. Aria Stone

#### DETAIL EXTERIOR CORNER WITH VINYL SIDING OPTION A

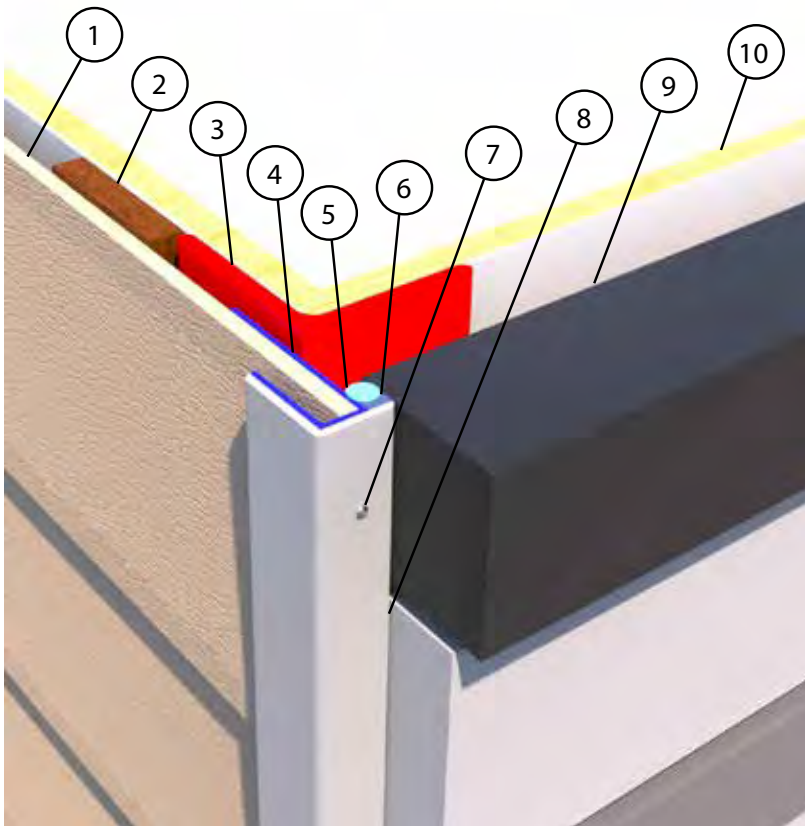


A return corner of at least 18 in. (460 mm) is strongly advised

#### COMPONENTS

1. Wood furring
2. Vinyl siding
3. Sheathing covered with WRB  
(Backup studs not shown)
4. Trim
5. Backer rod
6. Caulk
7. Aria stone

#### DETAIL EXTERIOR CORNER WITH VINYL SIDING OPTION B



This option can be used when there is no space for a return corner

#### COMPONENTS

1. Vinyl siding
2. Wood furring
3. Flashing
4. Trim
5. Backer rod
6. Caulk
7. Screws to fix capping  
(glue should also be used)
8. Capping (use similar color to stone)
9. Aria stone
10. Sheathing covered with WRB  
(Backup studs not shown)